

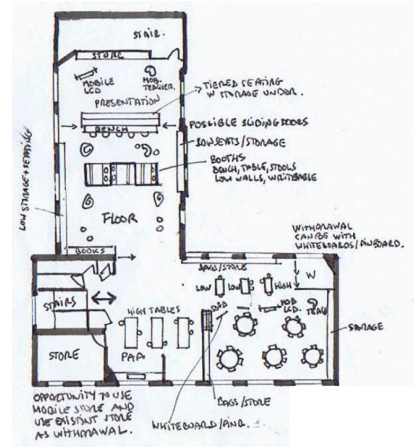
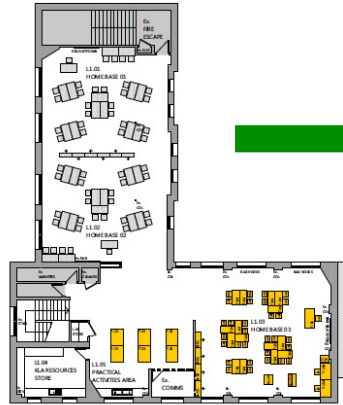
# SMALL SCALE REFURBISHMENT OR PROTOTYPE SPACE

## Educational space planning for a single space or suite of small spaces.

### 01

#### Quick Look

Total time: Approx. 6 months  
 Contact time: 5 – 18hrs  
 Delivery: Face to face or online  
 Workshops: 3  
 Deliverables: 3  
 Contact:  
[info@newlearningenvironments.com](mailto:info@newlearningenvironments.com)



### 02

#### Overview

Small scale refurbishments and prototype spaces are an excellent way for a learning community to explore the educational space planning process and improve spatial literacy. This type of project typically involves a single space or small suite of spaces (e.g. a learning space with break out, meeting room and workspace). The level of refurbishment can range from light touch (e.g. updating furniture) to more complex (e.g. removing or adding walls). Depending on the nature of the project NLE can lead the learning community through the planning of the space and then assist them as they work with an architect/builder/furniture provider to implement the changes. NLE's role is focused on educational visioning, space planning and occupancy. Ideally, this type of project would be followed by a post-occupancy evaluation that would provide insight into how the space is working and where improvements might be made either in educational practice within the space or the space itself.

### 03

#### Process

The process varies depending on the complexity of the project. A comprehensive scope commences with a start-up meeting to determine the nature of the project. This is followed by a visioning workshop. Workshop findings are summarised educational space planning principles for endorsement. The principles are then used as a reference point for the duration of the project. Site visits are optional and can be facilitated by the NLE team or managed by the school with our support and recommendations. A second planning workshop takes place where the space/s start to take shape in alignment with the planning principles. NLE then develops a plan for the space and assists the learning community in the best way forward to implement the design. A final workshop is conducted to finetune the design along with furniture workshop and briefing. The full process is captured in a Translational Brief which serves as a user's guide to the space. NLE can then assist with an occupancy strategy and later, a post-occupancy evaluation, both of which are separate services.

### 04

#### Requirements

- The process requires:
- 1x 30-60min start up meeting with leadership to understand the context of the evaluation and any distinct desirable outcomes.
  - 1 day of site visits (optional)
  - 3 x 1-2hr follow-up workshops with the educators, typically within 2 weeks of each observation.
  - 2 x 30-60min design meetings with the preferred designer/contractor
  - 1x 30-60min follow up meeting with leadership to review findings and close the project.
  - Additional meetings would be needed for the development of an occupation strategy and undertaking post-occupancy evaluation and associated professional learning.

